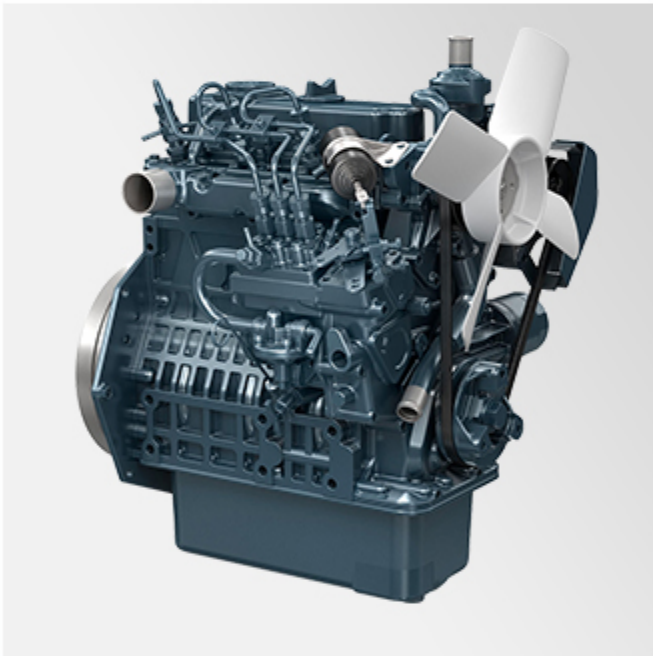




R18 PRO | MINI EXCAVATOR



R18 PRO: EXCLUSIVE FEATURES



ENGINE

KUBOTA D902 ENGINE, RATED POWER 11.8KW

- High-Efficiency power output
- Low fuel consumption
- Low noise & vibration



PUMP

VARIABLE DISPLACEMENT PISTON PUMP

- Provides stable hydraulic flow
- Flow rates of 41.4 L/min(10.9gpm)
- Keep the hydraulic system stable



VALVE

10-WAY HYDRAULIC CONTROL MULTI-PORT VALVE

- Easy and precise operation with responsive control
- Stable performance with smooth response
- Durable structure for reliable long-term use



R18 PRO RIPPA



TRACK

ENGINEERING RUBBER-TRACKS

- Smooth driving with little vibration
- Easily handle slopes and complex working conditions



MOTOR

BUILT-IN WALKING MOTOR

- The motor and reducer are integrated into one design.
- The overall structure is more compact
- It is more durable than an exposed structure.



FEATURES AND FUNCTIONS



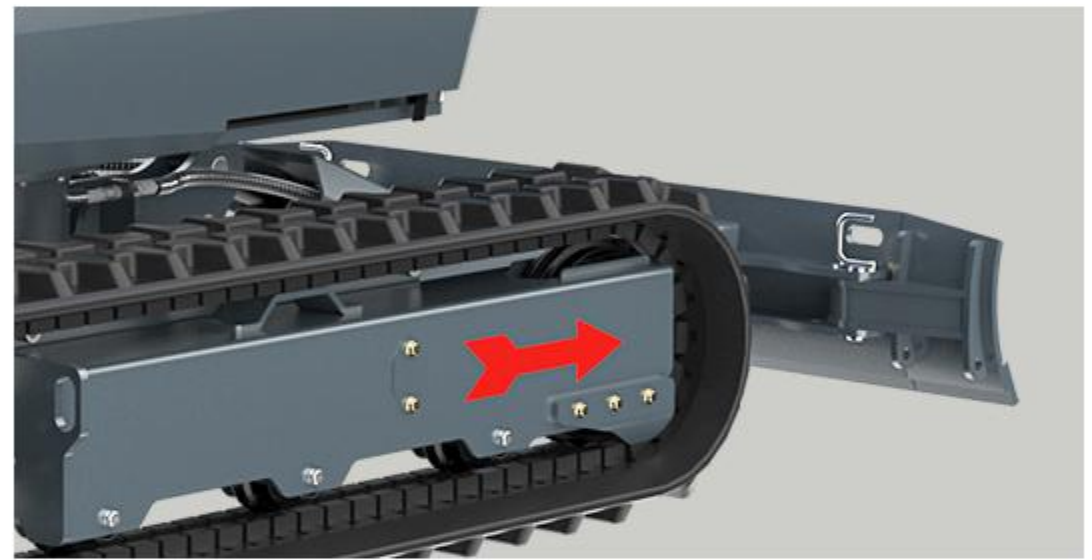


► COMPACT & RETRACTABLE DESIGN

With a width of only 849 mm, it can operate in confined spaces such as backyard alleyways and corners. It can efficiently complete tasks in these situations. It features retractable tracks with a range of 750-990 mm, easily extended and retracted via a control lever. When the tracks are retracted, it can easily pass through narrow passages and doorways; when extended, it offers excellent stability and is suitable for various tasks.

► RETRACTABLE DOZER BLADE

Features a retractable dozer blade with easily adjustable width for tight spaces. The blade can be extended or retracted by removing and attaching the pin, providing flexible operation and high pushing efficiency—ideal for leveling yards and small-scale construction projects.



WIDE RANGE OF OPERATIONS

► CAN BE EXCAVATED IN NARROW SPACES

By swinging the work machine, it is possible to excavate in narrow spaces and near walls.

Boom swing angle (right): 42°

Boom swing angle (left): 69°

► RETRACTABLE TRACKS

The R18 pro hydraulically adjustable track gauge can be narrowed down to 998mm in seconds with a simple single lever operation to allow navigation in tight spaces. Conversely, you can widen the track gauge all the way up to 1318mm.



FEATURES AND FUNCTIONS



KEY FEATURES



- » The control levers are located on both sides of the seat so that the operator can maintain a better, more relaxed working posture and have excellent forward visibility.
- » Adjustable seat, ergonomically designed to support the operator's back, waist and neck, reducing fatigue



caused by long-term operation.



- » The hydraulic quick-change tilt switch has dual mechanical protection to prevent accidental activation, enhancing safety.
- » The hydraulic quick-change valve block on the boom ensures safer hydraulic lines and reduces damage during operation.





- » The roof is fitted with a front spot-light and warning lights, ensuring better illumination and safety in low-light conditions.
- » Equipped with a rearview mirror under the roof for enhanced visibility and safety during operation.



- » Four-way high-pressure crushing oil pipe can realize more auxiliary equipment operations
- » Explosion-proof valve device prevents the boom from rupturing and causing a sudden drop due to gravity, preventing the boom from falling rapidly and causing damage to the machine.



► CANOPY WITH TOP WINDOW

So you never lose orientation, especially when loading. The canopy can be easily demounted as needed.



► HYDRAULIC THUMB & QUICK COUPLER

Improves efficiency and safety, allowing quick attachment changes and precise material handling.



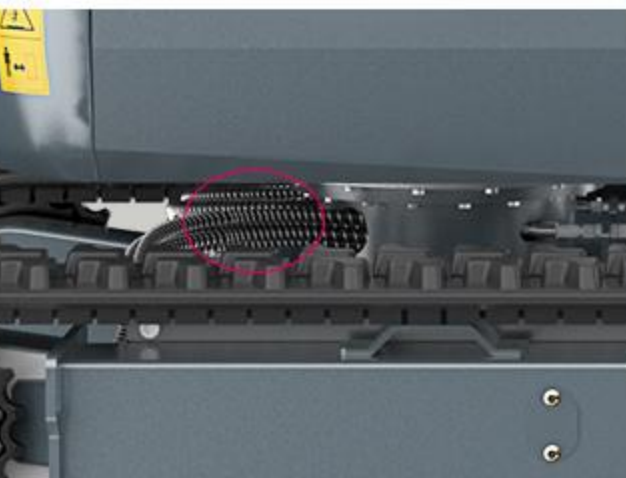
► DOUBLE BULLDOZER VALVE

Do not control bulldozer and telescopic, absolutely avoid oil leakage between bulldozer and telescopic.



► TA STEEL WIRE SPRING IS INSTALLED OUTSIDE THE OILPIPE.

To effectively prevent wear and damage to the oil pipe caused by rugged terrain, sharp objects and long-term friction.



► FRONT ROPS BAR

This protects the operator from the risk of falling. It can also be folded to accommodate different heights for transport, etc.

※ROPS (Rollover Protective Structure)

This stands for "rollover occupant protective structure" and refers to a structure that protects the operator wearing a seat belt from danger when the machine rolls over.



► COUNTERWEIGHT

Used to balance the forces generated by the front working device during operation, improving the overall stability of the machine. The counterweight effectively prevents the machine from tilting forward during excavation or lifting, making the equipment more stable under complex working conditions.



EASY TO MAINTAIN

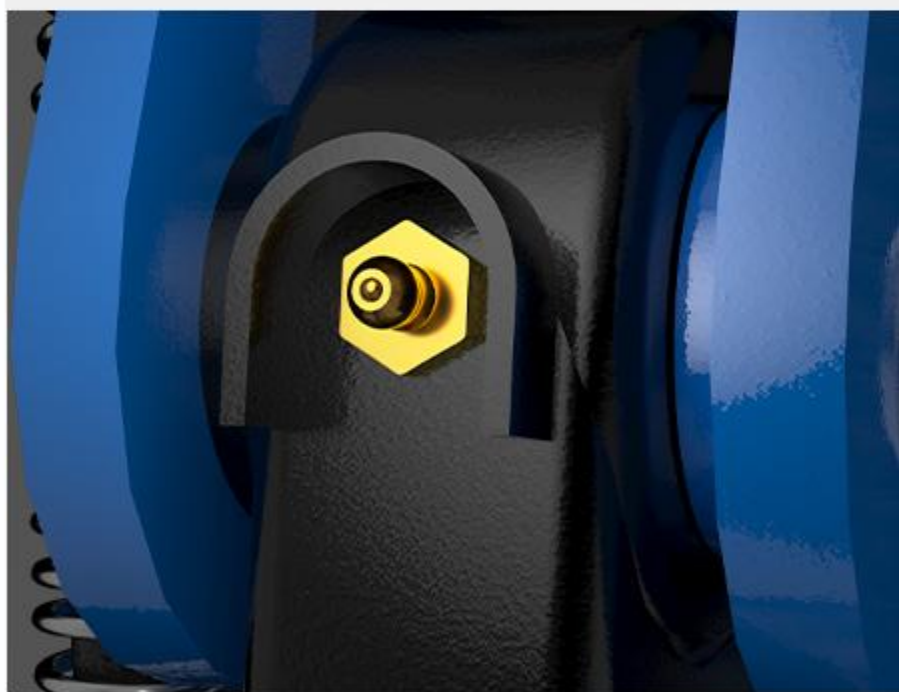


ENGINE COVER

- ▶ The rear hood can be easily opened, providing quick access to the engine and key components for daily inspection and maintenance. This design greatly reduces maintenance time, improves service efficiency, and allows technicians to easily check the condition of internal parts.



REDUCE MAINTENANCE COSTS



▶ GREASE FITTING PROTECTION

The cylinder is fitted with a nickel-plated pointed grease nipple and a welded protective block. The nickel plating resists water, mud, and corrosion while enhancing surface hardness. The pointed design ensures precise grease gun connection, preventing slipping or leakage, and the welded guard protects the nipple from damage during operation.



▶ TRACK TENSIONING MAINTENANCE PORT

Featuring a metal enclosed cover design with a reserved independent tensioning maintenance window, this system allows for quick access to the tensioning cylinder and grease fittings without disassembling tracks or large protective plates, effectively shortening maintenance and repair time.



▶ RUBBER KEY COVER

The rubber cover protects the key slot when the key is removed, preventing dust or debris from entering. This helps avoid starting issues and protects the internal electrical components of the key, extending its lifespan and offering a more user-friendly design.

DRIVER'S CAB MODEL



▶ FLIP UP WINDSHIELD

The windshield can be flipped up, and it is easy to switch between closed and open modes according to weather and working conditions. In hot weather, the flip-up design provides natural ventilation, improves air circulation inside the cab, and enhances comfort. The front windshield is easy to clean, making maintenance easier.



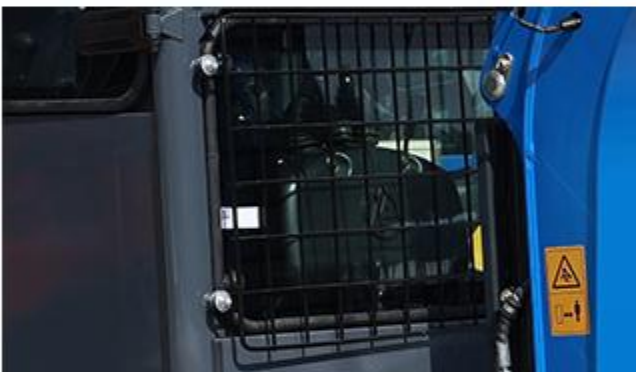
▶ WIPERS

It can spray windshield washer fluid for a cleaner glass, ensuring drivers have good visibility in rain, snow, or muddy weather, improving work safety, preventing operational errors caused by obstructed vision, increasing work efficiency in inclement weather, and reducing downtime.



▶ PROTECTIVE NET

It can effectively block flying stones, branches and other debris, significantly reduce the impact damage to the cab glass and internal equipment, and protect the driver's personal safety.



▶ LARGE LCD DISPLAY

The excavator's LCD screen displays the equipment's operating status in real time, allowing operators to easily monitor the machine's condition. The interface is intuitive and clear, and operation is simple, improving equipment management and work efficiency. Simultaneously, the LCD screen provides fault prompts and maintenance reminders, helping to identify problems promptly. Overall, this enhances the excavator's ease of operation and safety.



▶ HEATER

Rapidly heats the cab to keep the operator warm, reduce fatigue, and clear windshield fog and frost for better visibility.



▶ FAN

Improves ventilation, keeps the cab fresh and cool, and enhances operator comfort and efficiency.



▶ FRESH AIR SYSTEM

Sustainably introduces fresh outside air to improve air circulation in the driver's cabin.



▶ HYDRAULIC CYLINDER GUARD PLATE

A cylinder guard is added to the cylinder to effectively protect the cylinder.



RIPPA ATTACHMENTS



PERFORMANCE MATCHED

It supports quick attachment changes, enabling one machine to handle digging, breaking, grabbing, drilling, leveling, and trenching. By adapting to different tasks, it boosts efficiency, reduces equipment and rental costs, and lowers labor dependency. More than just a machine, it's a personal engineering team ready to work anytime.

Visit rippa.com



BUCKET

- Optional bucket sizes.
- weight: 35kg
size: 66 × 25 × 38 cm
- weight: 50kg
size: 66 × 45 × 38 cm
- weight: 72kg
size: 66 × 85 × 38 cm



MUD BUCKET

- Optional mud bucket sizes.
- weight: 40kg
size: 53 × 62 × 38 cm
- weight: 49kg
size: 53 × 82 × 38 cm
- weight: 58kg
size: 53 × 102 × 38 cm



SKELETON BUCKET

- Optional skeleton bucket sizes.
- weight: 55kg
size: 66 × 65 × 38 cm
- weight: 66kg
size: 66 × 85 × 38 cm



RAKE

- Optional rake sizes.
- weight:42kg
size:78 × 40 × 30 cm
- weight:58kg
size:78 × 60 × 30 cm
- weight:80kg
size:78 × 80 × 30 cm



RIPPER

- Optional ripper size
- weight:18kg
size:56 × 20 × 25 cm



TILTING BUCKET

- Optional tilting bucket size
- weight:61kg
size:74 × 80 × 30 cm
- weight:61kg
size:74 × 100 × 30 cm



LOG GRAPPLE

- Lightweight log grapple size
weight:41kg
size:54 × 48 × 56 cm
- Hydraulic rotating log grapple size
weight:145kg
size: 55 × 85 × 93 cm



HYDRAULIC BREAKER

- Hydraulic breaker size
- weight:83kg
size:66 × 30 × 40 cm



LAWN MOWER

- Lawn mower size
- weight:148kg
size:125 × 45 × 70 cm



ROTARY DRILL

- Optional rotary drill sizes.
- Weight: 53kg
Length: 130cm Diameter: 20cm
- Weight: 56kg
Length: 130cm Diameter: 30cm
- Weight: 58kg
Length: 150cm Diameter: 30cm
- Weight: 64kg
Length: 170cm Diameter: 30cm
- Weight: 63kg
Length: 200cm Diameter: 30cm



TILTING BUCKET

- Double-cylinder tilting bucket size
- weight: 61kg
size: 74 × 80 × 30 cm
 - weight: 66kg
size: 74 × 100 × 30 cm



COMPACTOR PLATE

- Optional compactor plate sizes.
- weight: 110kg
size: 34 × 65 × 57 cm



HYDRAULIC THUMB

- Optional hydraulic thumb sizes.
- weight: 35.2kg

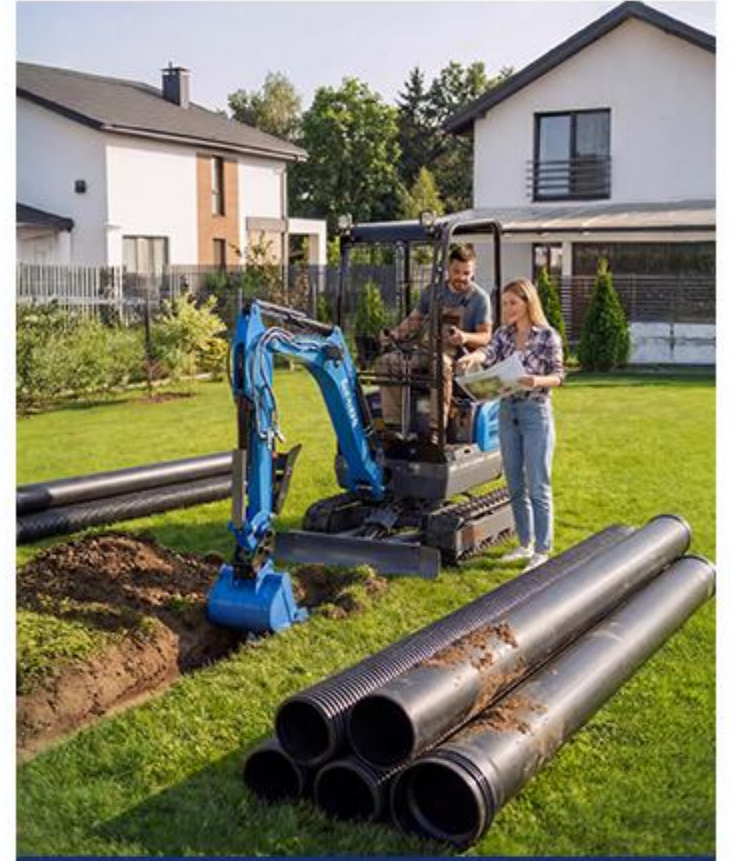
APPLICATION SCENARIOS



Pool Digging



Driveway Repair



Drainage Trenching



Stump Removal



Tree Planting



Snow removal



Land Leveling



Fence Installation



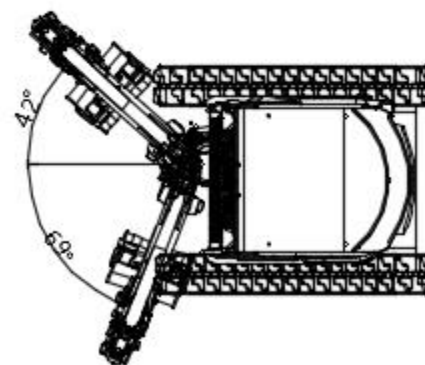
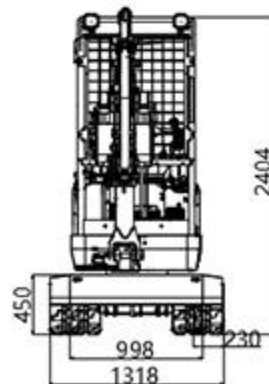
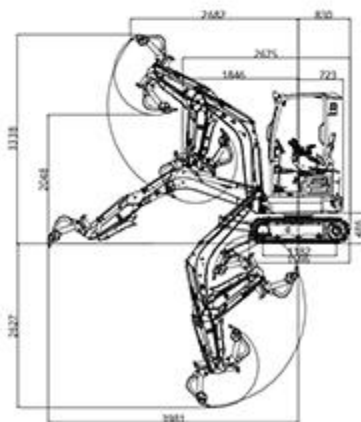
Small Foundations



Farm Construction

DETAILED PARAMETER CONFIGURATION

Basic parameters		
Operating weight	1818 kg	2904lb
Bucket capacity	0.045m ³	1.59ft ³
Travel speed low/high	0-1.5/0-2.8Km/h	0-0.93/0-1.74mph
Gradeability	30%	30%
Ground pressure	30.33Kap	4.4psi
Maximum digging force	12.8kN	2878lbf
Maximum digging radius	3981mm	156.8in
Maximum digging depth	2627mm	103.5in
Maximum digging height	3338mm	131.5in
Maximum dumping height	2048mm	80.6in
Maximum deflection angle	111°	111°
Track extension range	998-1318mm	39.2-51.9in
Body		
Transport length	2675mm	105.3in
Transport width	998mm	39.3in
Transport height	2404mm	94.7in
Counterweight ground clearance	486mm	19.1in
Bucket width	400mm	15.7in
Boom length	1780mm	70.1in
Arm length	1120mm	44.1in
Bulldozer blade width	1000/1310mm	39.4-51.6in
Engine		
Engine brand	Kubota	Kubota
Engine model	D902	D902
Maximum power	11.8kW	15.8hp
Maximum speed	2300 rpm	2500rpm
Displacement	0.898L	0.237gal
Number of cylinders	3	3
Cooling method	Water-cooled	Water-cooled
Engine oil change amount	3.8L	1gal
Fuel form	Diesel	Diesel
Fuel grade	0/-10	0/-10
Theoretical fuel consumption	1.5-1.8L/h	0.396-0.476gal
Hydraulic system		
Main pump type/model	Variable displacement piston pump / 18	-
Multi-way valve	10-way hydraulic control multi-port valve	-
Multi-way valve brand	Taiming Hydraulics	-
Rated set pressure (Mpa)	22MPa	3190.8psi
Maximum set pressure (MPa)	24MPa	3480.9psi
Travel hydraulic motor type	LTM03CDK	LTM03CDK



Unit: mm

Shandong Rippla Machinery Group Co., Ltd.

Address: No. 39, Guang'an Road, Lihang Sub-district Office, High-tech Zone, Jining City, Shandong Province.

Some specifications are based on engineering measurements and may differ from actual conditions. Specifications are for comparison purposes only and are subject to change without notice. Specifications of individual RIPPA devices may vary due to normal variations in design, manufacturing, operating conditions and other factors. Some images of RIPPA devices are not limited to standard packages.



RIPPA®